

Contents



Soccer ScoreSheet by **KazMax**

Copyright 1994-1996 - All Rights Reserved



General

These options provide the user with general information about the application.

- [Introduction to **Soccer ScoreSheet**](#)
- [Version Information](#)
- [Change History](#)
- [Known Problems](#)
- [The Shareware Concept](#)
- [Registration](#)
- [Registration Form](#)
- [Please Note.....](#)
- [Terms And Conditions](#)
- [Association Of Shareware Professionals](#)
- [Thanks To.....](#)
- [De-Installation](#)

Functional Dialogs

These dialogs provide the general functionality of the application, and are arranged here in the heirachical order in which they can be accessed.

- [Main Dialog](#)
- [System Options Dialog](#)
- [League Dialog](#)
- [Division Dialog](#)
- [Team Dialog](#)
- [Team Review Dialog](#)
- [Match Review Dialog](#)
- [Fixtures Dialog](#)
- [Match Review Dialog](#)
- [Prediction Dialog](#)
- [Statistics Dialog](#)
- [Graphical Analysis Dialog](#)
- [Prediction Configuration Dialog](#)
- [Perm Configuration Dialog](#)
- [Match Review Dialog](#)
- [Configuration Dialog](#)

Utility Dialogs

These dialogs provide additional functionality for the application, and can be accessed from multiple places as a feature of needing to select options to carry out a task. There is no particular hierarchy to the order in which these dialogs might appear - they will only do so as a result of the user selecting an option from one of the other dialogs shown above.

[Calendar Dialog](#)
[File Dialog](#)
[Clipboard Dialog](#)

Application Messages

During normal use the application will present pop-up message boxes to provide feedback to the user. These explanations will help the user to understand these messages, and as necessary how to overcome a particular difficulty.

[Information Messages](#)
[Confirmation Messages](#)
[Error Messages](#)

Further Information

Users who intend to make use of this application for submitting entries to football pools competitions may wish to gain an insight into how the various algorithms work to produce a prediction on a match.

[The Algorithms Explained](#)

Version Information

This help file is current for **Soccer ScoreSheet** version 8.01.xx, which is available in both a Windows 3.x 16-bit version, and a Windows 95/NT 32-bit version.

The version of the software which you are using is shown in the top right corner of the [Main Dialog](#), immediately underneath the application logo.

Introduction



[.....check it out!](#)

Welcome to **Soccer ScoreSheet**, the soccer league fixture and data management application designed for flexibility and ease-of-use. Right from the outset we need to draw to your attention that this application is released under the [shareware](#) concept. That means it isn't free, or sort-of free, under any convenient misunderstanding that you might seek to apply. You are entitled to try out this software free of any charge for a preset [evaluation period](#), and thereafter you are required to either pay the [registration fee](#) to the [authors](#), or discontinue use and [delete all related files](#) from your system. Please also refer to the [terms and conditions](#) to ensure that you are fully aware of warranty and other important matters relating to this software.

Perhaps we should also point out that **Soccer ScoreSheet** is not designed or intended to be used by computer novices (people who do not know how to use Microsoft Windows for example), or by anyone who is not familiar with soccer league arrangements (and/or football pools competitions if applicable). The authors cannot offer help on how to use the application from first principles of, for example, using the PC mouse.

Soccer ScoreSheet is actually two highly-configurable applications rolled into one. Firstly, it manages data relating to soccer leagues. This breaks down into divisions, teams, and fixture information, in just the way that a normal soccer league system does. Secondly it provides a number of features designed specifically to assist with football pools management - this includes fully configurable prediction algorithms, perms support, automatic points analysis, and so on. This will suit either individual or syndicate requirements. However please note that we do not try to suggest that this application will promise an instant fortune on the pools, and we try to [set your expectations](#) accordingly.

About 50% of our satisfied registered users do not use both league and pools management features - they use the application simply as a means to easily manage their local teams and leagues, such as Sunday afternoon or other minor arrangements. There is absolutely no reason why you should assume you have to make use of all the features in this application either - if you want a soccer data management application please do not be put off by any suggestion that this application is just for the football pools enthusiasts - it isn't.

We want you to be very satisfied with this application - in fact we want you to be delighted more than satisfied, so we try our best to ensure you understand our policy when it comes to [making claims about capabilities](#). And to make our commitment to you even better we offer a [no-quibble full](#)

[refund guarantee](#) in the event that you find you aren't delighted after you have registered. This is explained in more detail in the section covering [registration benefits](#). We don't expect you to want to take advantage of this arrangement, however if we fail to live up to the expectations we set before you registered this [shareware](#) then you have every right to expect us to respond positively to your notification of that situation.

And with version 8 we have introduced a [referral payback scheme](#), so that if you are so delighted with this application that you cause other registrations to come about, we'll reward that activity. Introduce enough new registrations and you would have paid for your own 'free' registration, or even make a profit on the arrangement!

Finally, could we bring to your attention one possibly misunderstood attribute of the shareware distribution arrangement. The greatest strength of this arrangement is that shareware can be distributed freely, by anyone, to literally anywhere. But unfortunately this is also its greatest weakness - [authors](#) such as ourselves usually have no control at all over where you may have obtained this application from, and thus when we release an updated version there is no immediate means at our disposal of our being able to replace every earlier version in existence. We do try to replace as many outlets as possible, but we can never reach every copy. As you can appreciate, we can only reasonably be held liable for the [terms and conditions](#) as defined in the latest publicly released version of this software, and at all times that latest version shall supercede and obsolete all earlier versions. For the purposes of a clear definition about what is the latest publicly released version, this shall mean the latest version that has been made available for download via Compuserve.

Refund If Not Delighted

If you decide to register **Soccer ScoreSheet** and feel that we have let you down in what we promised to provide you with (see the section on [Registration](#)), then we offer a no-quibble full refund guarantee. Just send back the registration materials - disk etc - within 15 days of receipt with a clear explanation of why you weren't satisfied and we will refund your registration fee, in full.

Please Note.....

Your attention is drawn to our policy of ensuring that you are not misled with regard to the capabilities of this application. We know other software packages are available that may suggest that they will substantially increase your chances of winning on the football pools. Maybe they do, and maybe they don't - that is up to the user to decide. As the authors of this application we make no claims whatsoever about its effectiveness or otherwise at predicting the outcome of football matches yet to be played.

If you find this software helps you to be more effective on the pools then that is your perception - but we are definitely not trying to sell this application on the basis of it being a '*pools prediction program*'. Sorry, if you want one of those we would really much prefer you purchase an alternative - we do not want to be held responsible in the event that your dreams have not been realised.

History

See also: [Previous Version Warning](#)

Future Versions

We can never guarantee there will be any future version of this application, however if past experience is anything to go by there will be, as new ideas get implemented and users feed back useful information about what they would like to see.

With version 8 we have introduced a new registration scheme whereby you are provided with a unique serial number keyed to your name. This serial number will allow you to register **Soccer ScoreSheet** for all future version 8's that occur, and thus if you download a later version 8 from Compuserve or elsewhere you will be able to make that a registered version, without any further fee being paid to the [authors](#). Obviously if you are not able to use some form of download service you can still obtain updated versions from us as before, and this will incur the cost as advised to you when we advise you of updated versions which become available.

We reserve the right to modify the software so that a future version 9 (or beyond) will not work with your personalised information, and at such time we may opt to levy an upgrade charge if appropriate (it should not be assumed that this will be the case - we may need to make this change for reasons of protecting our copyright).

Just to set your expectations from the outset, our upgrade policy is to cover the costs involved in producing and sending the new version to you, without there being a major element of profit added. Some shareware authors expect a considerable further investment in their new versions to obtain an upgrade - this has never been our policy. We believe that if we keep you happy by providing a good and reasonable service then you may be encouraged to suggest our products to your friends and colleagues - and please note that if you do so you will be entitled to a [referral payback!](#)

Version 8.01.xx

This is a fundamentally major new release of the earlier product. It incorporates an entirely new design to support advanced functionality that many users asked for in earlier versions. Those features could not be easily added to earlier versions for technical reasons - in some respects the original design of the application did not lend itself to the sorts of changes requested.

The major changes which apply to this version are shown in the section on [Major Updates \(Version 8.01.xx\)](#).

Pre-Version 8.01.xx

All earlier versions of this application have been superceded, and are now

obsolete. All previous registered users are (or were) on versions 6.x or 7.x, and therefore there are no earlier registered versions in use anywhere that we are aware of.

As per our normal upgrade policy all earlier version users are provided with an upgrade path to this new version.

Major Updates (Version 8.01.xx)

These are some of the major features added at version 8.01.xx of this software.

Two Versions!

Soccer ScoreSheet is now supplied in both a Microsoft Windows 3.xx 16-bit version, and Microsoft Windows 95/NT 32-bit version. These share a common database and other attributes, and thus a user who may wish to move between platforms can do so without any loss of their data or configuration.

Good Author Relations!

We have always strived to provide the best possible level of service to our customers, and were interested to find from joining the [ASP](#) that perhaps we could improve our service level even further through just a couple of small but significant changes.

The first option is that we will now guarantee to provide a [full refund](#) to a newly registered user in the event we fail to live up to what we promised prior to documentation. In fact this isn't a change at all - we have always been willing to do so (and on one occasion actually did). The only change here is that we are publicly confirming that fact.

The second option pertains to several users who have contacted us in the past asking if they could act as sponsored distributors of this application. Unfortunately the answer to that enquiry was always no - and for reasons of legal responsibility and accountability is still no. However we have now introduced a [referral payback scheme](#), so anyone who introduces a new registration to us will directly benefit from doing so. We hope this will go some way to providing a reward for helping to distribute this application to a wider audience.

We invite all users to [contact us](#) in the event we might be able to improve our service even further.

User Registration

Soccer ScoreSheet is now supplied with a user registration system built in, which means that if we release a new version the user is able to download that version from an on-line system (if appropriate), and immediately gain access to the latest features. Of course, we shall still maintain our policy of being able to provide shipment direct to the user as a costed option, for those people who do not have on-line access.

This scheme will also allow us to be more responsive to people who decide to register via the [SWREG](#) scheme operated by Compuserve, as we shall be able to immediately provide the necessary registration information by return Email (registration benefits will still be supplied via normal mail).

Note: This re-registration of updated versions can only be guaranteed where the major version number does not change. For example the user name/serial number supplied for version 8.xx.xx will be guaranteed to work for all versions beginning with '8', but not necessarily '9' or beyond. We reserve the right to request further payment for an upgrade if another major version is released (this should not imply that this will definitely be the case).

Shareware Changes

The shareware (unregistered) version of this application will now operate as a fully registered version for 45 days from first installation, to give the new user ample time to decide whether they wish to register or not. Towards the end of this period the shareware version will provide non-intrusive feedback to advise that the evaluation period is nearing an end.

Although the shareware version will continue to operate after 45 days to allow the user to access the data they previously entered, some non-critical functions will be permanently disabled, hardcopy will be embossed with a heavy watermark advising of the unregistered status, and the user will be annoyed with continual shareware reminder screens. These attributes will never be applied to the registered user.

Dialog Changes

There have been quite a lot of dialog changes implemented - far too many to explain here. However here are the major changes.....

On first startup the established user will immediately notice that the Main Dialog is of a different format. In fact it goes way beyond what was available before - the user can now independently configure via a new Configuration Dialog all 8 pages of team information - each page contains 12 user configurable columns, and thus for each team there are now up to 96 different pieces of statistical information which can be made accessible in whatever arrangement the user chooses. The new Match Review Dialog, accessible from several other dialogs, also allows the user to peruse this information on a per-match basis.

Another significant change is that there is no longer a separate fixtures and scores dialog, both of these are now incorporated into a combined Fixtures Dialog.

Team League Position History

One of the major requests which we could not implement earlier was that our users wanted to be able to review the changing position of a team within the league structure over time, to gain an insight into whether the team was moving up or down the league table.

This is now fully implemented, and via the new Configuration Dialog the user can define options which show either the position of the team, or its relative

change for up to the last ten weeks of the season.

A drawback of this new functionality is that it takes a considerable amount of time to recalculate the team positions each week. On a fast PC this will probably be acceptable, but on a slow machine this time may be far too long. Thus the user can enable/disable this option via the new [System Options Dialog](#).

Prediction Algorithms

Previously there were some preset algorithms provided to those interested in using this application in pursuit of their football pools competition entries, but those algorithms were fairly fixed - and not explained in detail. This may have given a misleading impression that we were not being open about how the algorithms were working internally.

The user is now provided with 8 different statistical options for each of the 4 algorithms via the [Prediction Configuration Dialog](#), plus the options are fully explained in the section on [Algorithms](#). Whilst we do not try to pretend that these algorithms will do anything to help win on the football pools, at least the user is aware of what the algorithms are trying to compare between teams playing each other, and can thus make their own decision about how to use these options.

Division Sorting

In version 7 of this application we introduced functionality to allow the user to define the team sorting order within each division, and that extended the usability quite a bit.

With version 8 we have taken this even further and allowed the team sorting to be defined on an even wider range of statistical information. This is enabled via the [Division Dialog](#). This will potentially allow the different combinations of team sorting to run into millions of different options.

Colour Schemes

Soccer ScoreSheet now makes even more use of colour, particularly in relation to prediction schemes implemented via the [Prediction Dialog](#) and other places. And all these colours are now fully user-configurable to suit personal taste via a new [System Options Dialog](#).

Furthermore, the user can set unique colours for their favourite teams via the [Team Edit Dialog](#). This will allow much easier location of those teams when these appear in a list of fixtures and so on.

Outstanding Results Etc.

One of the noticeable drawbacks of earlier versions was that whilst it was possible to immediately see whether there were any fixtures on a given date,

there was no indication whatsoever about whether those fixtures had been completed, or whether these were pools matches. The Calendar Dialog only showed dates with fixtures in a different colour.

The all-new [Calendar Dialog](#) is very different. It not only shows which dates have matches defined, but those dates are now colour-coded using the user-defined colour scheme set via the new [System Options Dialog](#). It is thus possible to see immediately whether results are outstanding for a particular date - and which dates are pools coupon orientated.

Graphical Analysis

The graphical analysis options provided in earlier versions are still available, however we have worked hard to make improvements in this area also. For example the pools number statistics dialog allows the user to set a date range, whereas before it was a take it or leave it full season analysis.

Similar changes have been implemented for the graphical analysis of the predicted versus actual results graph.

Setting The Draw Window

Whilst the [draw window](#) still operates the same way and has the same meaning as far as the application is concerned, setting the window is now radically different. It is now only possible to set this window via the [Graphical Analysis Dialog](#), and this is achieved simply by clicking on the graph itself to move the lower and upper limits to a new position. This is a lot less complicated than before - and the statistical feedback available on this dialog will be a lot more helpful as well as it relates directly to the pools points achieved over time for the entire graph, and the subset to which the draw window applies. The user can now include/exclude match result types on this dialog, thus making it far easier to see where the home/away wins and draws are occurring in relation to the predicted results.

Known Problems

As is our normal policy, **Soccer ScoreSheet** has been put through a beta test arrangement before being formally released to the general public. That beta test should have caught any major problems which may have been present, although as with all complex software projects we obviously can never guarantee perfection. We are extremely grateful to those individuals who contributed by playing a part in the beta test, and any failure to catch problems before public release can never be attributed to their dedication in helping us to achieve a viable product.

All Versions

Some users have reported that the results produced on their printers give different hardcopy quality to other users, in so far that page titles overlap box edges, and detail sometimes appears to be overlaid within a report.

This is a very difficult problem to reproduce, as each printer and driver set will not necessarily produce identical results on another printer/driver combination. If you experience problems with hardcopy (printed reports) which do not seem to be ideal, one solution may be to obtain (or use) a different/enhanced or compatible driver for your printer - we have even found that a similar model printer misbehaves when a different driver is used, so it is definitely worth trying this as an alternative before giving up.

Printing technology within this application is designed to be as generic as possible, and not tied to any specific model or manufacturer.

In any event, if you experience problems with printing quality and text overlay, [the authors](#) would be very grateful for your advice to this effect. Please let us know what type of printer you are using, which operating system (Windows 3.x or 95), and which driver revision you have (it would also be very helpful if you could mail us a hardcopy of the report which is not behaving itself so that we can see exactly what the effect is). Over a period of time we shall try to construct a table of printers/drivers from feedback received, and if at all possible implement changes which might improve this situation.

In the meantime, if you are affected by this problem, please do not despair - we will do our best to improve the situation to your benefit if we possibly can.

Windows 3.x Version

At this time there are no known problems with the application concerning the Windows 3.x version.

Windows 95/NT Version

The following problems are noted for Windows 95/NT.

ListBox BackGround Colour

There is a known bug whereby the background colour of listboxes (configurable by the user via the new [System Options Dialog](#)) does not fill the complete listbox. This only affects listboxes which are only partly complete.

Unfortunately this seems to be a quirk of the system. The authors have tried to remedy this situation, but to no avail. This will continue to be worked on as time progresses.

This is not a serious problem - it is cosmetic only.

The Shareware Concept

See also: [Registration](#)
[Please Note.....](#)
[Previous Version Warning](#)

Like a great many other successful applications, **Soccer ScoreSheet** is released under the shareware concept. This concept aims to provide high quality products at a very moderate cost to the user.

The great advantage of a shareware product is that the user really does get to [try the software for real](#) before having to part with any money, and if they don't like it then they never have to pay a penny. You don't usually get that privilege with commercial software, and even where a company might offer to accept a return with money back guarantees there is invariably some penalty attached (restocking and postal charges etc.). Apart from the small costs involved in obtaining the shareware version of an application, it is free from all costs associated with making up your mind that you really do want to purchase it.

Please Note: It is possible that you may have paid a small sum to a shareware distributor to obtain the shareware version. None of that money goes to the authors, and it definitely does not form part of any [registration cost](#). The authors will never become involved in a dispute between a distributor and end-user over any issue.

The reason that shareware is much less costly (usually - some shareware isn't) than commercial software is very simple - the authors of the products generally do not have to support a large sales and support organisation, plus the product does not have to be provided in glitzy shrink-wrapped packaging which are of no further use once the product is removed from that packaging. Shareware is actually a method of distribution rather than a description of the product.

Commercial software is often assumed to be in some way superior to shareware, because it has a familiar company name on the label, so of course it must be better, mustn't it? In fact some people (and many companies) will not use shareware because they believe that it simply can never be reliable or useful to them, and they have a notion of '*you pay for what you get*'. In other words, they feel uncomfortable with any software which they have not needed to pay enormous sums of money to own the right to use. Of course, there is shareware available which does not do justice to the concept, and perhaps these individuals who do not like shareware have had a poor experience with such a product - but there is no justifiable reason why all shareware has to be classified as being of poor quality.

As with a great many other shareware products, **Soccer ScoreSheet** has been conceived, designed, implemented and supported by a professionally trained and experienced Windows software developer of many years

standing, who as an author-member of the [Association of Shareware Professionals](#) continues to seek improvements in the product as time passes. Like the vast majority of shareware authors we will actively and urgently respond to feedback from all users - and if we can resolve a problem for you - we will. We aim to give a much better support service than many high-profile companies which we could name.

Registration

See also: [The Shareware Concept](#)
[Please Note.....](#)
[Previous Version Warning](#)
[Registration Form](#)

Registration of a shareware product such as **Soccer ScoreSheet** is a very simple and painless exercise. You pay a small one-time [fee](#) to the product [authors](#), and for that fee you receive the right to continue using the product without further time limit. Plus, you receive some other benefits which are never made available to non-registered users.

Please print and complete the [registration form](#) provided in this on-line help, and send it to the address shown for [the authors](#) with your [payment](#). Alternatively use the [SWREG](#) service on Compuserve.

The user should be aware that the registered version of this software may never be made available to others, or distributed in any way. The registration fee provides a single personal copy of the registered version, and it is not possible to register a copy for a named club or organisation (obviously the secretary or other committee member can take out a registration). The reason for the latter is to assist in the prevention of mass distribution and the making of illegal copies of the software - we would be happy to negotiate a reduced registration fee in the event that a number of individuals wish to register at once.

We must also draw your attention to the [terms and conditions](#) relating to use of this product. Both authors and users have obligations which they must meet.

Registration Benefits

When you register **Soccer ScoreSheet** you will immediately receive the following benefits from the authors.

Satisfaction Guaranteed. If you decide that you do not wish to be a registered user within 30 days of shipment of your registered version, we guarantee to return your registration fee in full providing you return the registration materials (disk etc.) to us with an explanation of why you no longer wish to be a registered user (please note that this guarantee will only cover your registration fee, not shipping and other charges which might be incurred). If you aren't happy we would like to know why so that we can try to improve our service for everyone's benefit.

Right To Use. The authors provide you with a non-exclusive and non-transferrable right to continue using this software, without further time penalty (this permission is revocable in the event that you are perceived to be acting against the bona-fide interests of the authors, but we aren't going to take that action without there being good cause).

Personalisation Of Software. Your copy of the software will be personalised specifically for you, and show your name in the main title bar and elsewhere.

Unrestricted Features. The registered version of the software will not be restricted in functionality. During the initial evaluation period neither shall be the non-registered version, however this will change when the evaluation period is complete - registering the shareware will remove these limitations once more.

League Copy Option. There is one feature which isn't made available in the shareware version, which will become available in the registered version. When you select the option from the [Main Dialog](#) to add a new league you will be given the option of copying the currently selected league definition. This will copy all of the division and team structure to a new league definition - very useful at the end of one season in preparation for the next season.

Latest Version. The latest available version of the application will be sent to you on a floppy diskette. You may already have the latest version - but you may not.

Latest League Tables. This software makes use of soccer league tables, and you will almost certainly have an out of date copy of the English data files for your evaluation (simply because you will have obtained the shareware version some time after it was released, not because the authors have chosen to release an old data file). Upon registration the authors will provide you with the latest English league tables which they have available. There can however be no absolute guarantee that these are completely up to date - if this is of concern to you please [contact us](#) prior to registering this product and we will confirm the current availability.

Support From The Authors. In the event that you need some assistance with the product then the authors will always do their best to help your use of the application in whichever way they can. Registered users are always given priority over non-registered users, and whilst the authors will try to help a non-registered user, the latter will tend to find that over a period of time their support will become much less responsive.

Newsletter. The authors provide a newsletter to registered users, with the intention that a new version will be published regularly to provide updates on what the current status of development is, and other topics which may be of interest to users. The latest newsletter will be provided with the registration materials.

Low-Cost Upgrades. Where applicable, when a new version of the application is released, the authors will advise previously registered users and make available a low-cost upgrade path (this will usually be via a newsletter). The cost involved is intended to cover the costs of the exercise as we don't try to make a large profit out of our existing customer base and thus risk damaging their continued loyalty to our products.

Referral Payback. In the event that a previously registered user introduces a new registered user, the authors will provide a cash incentive to the person making the introduction.

Referral Payback

This applies to version 8 onward only. The individual making the introduction must be a bona-fide registered user of the current major release, and for obvious reasons this option cannot be applied to any new registration.

Any previously registered user of **Soccer ScoreSheet** can receive a credit of **£5** (five UK pounds) for introducing a new registration to the authors. To qualify for this credit, either the new user or person making the introduction must advise the authors of the name of the person making the introduction within 7 days of the registration taking place - if registering direct with the authors then this detail should be recorded on the registration form. Otherwise, please send an Email/letter to the authors explaining this circumstance.

This credit can be implemented in any one of the following ways:

1. A cheque/postal order to the value of £5 sent to the person making the introduction (UK funds only)
2. A 'free upgrade' to be sent to the person making the introduction if/when the next version appears.
3. A reduction of £5 against the new registration fee (doesn't apply to SWREG registration for technical reasons - sorry).

Please note that only one of the above can apply! The authors reserve the right to modify this scheme without notice.

Registration Form

See also: [The Authors](#)
[Registration Fee](#)
[Terms and Conditions](#)
[Shareware](#)
[Registration](#)

For [direct payment](#) to the authors please print out this help topic, complete, and mail to [the authors](#) with the [registration fee](#). Alternatively if you are a member of Compuserve use the [Compuserve SWREG service](#), in which case this form will not be necessary.

Please print/write legibly - and ***show your name as you wish it to appear in the registered version!*** Sorry - to protect our copyright and help prevent mass distribution registration is only available to named individuals, so please do not express a club or organisation here.

Your name _____

Address _____

Where did you obtain the shareware version from? (This helps us to keep that source updated with new versions - please be as specific as possible)

Registration Commitment

In providing this registration to the authors of **Soccer ScoreSheet** I am agreeing that I have read, understood, and agreed with all of the aforementioned sections (those expressed in the 'See also' section at the top of this form). I agree that I shall be bound by the [terms and conditions](#) expressed herein.

Signed _____

Dated _____

Registration Fee

There are two ways to register this application - [direct with the authors](#), or via the [Compuserve SWREG scheme](#). There is no financial advantage to either method to the user seeking registration.

Before you register, please ensure you have evaluated the very [latest shareware version](#) available in case the terms and conditions have changed. The authors shall only be liable for the terms and conditions as defined in the latest release version. If you are not evaluating the latest version then the terms and conditions, benefits, costs, etc., may have changed.

The authors reserve the right to amend pricing without notice.

Direct Payment To The Authors

Send a cheque or money order direct to the [authors](#). This must be made out in UK pounds only, to a UK clearing bank, payable to **Karen S McKay**. The amount required is **£19** (NINETEEN UK POUNDS). Sterling only please. Several international users have found that Giro cheques (from the post office) are the most convenient form of direct payment for them, so this may be worth checking out.

Cash is also acceptable (UK funds please), however the onus is on the user to ensure this arrives safely as the authors will accept no responsibility whatsoever if such a transaction gets mislaid. We would advise the user not to send cash unless it is properly mailed via a recorded delivery scheme.

Please note that (from version 8 onwards) the authors operate a [referral payback scheme](#) for previously registered users who subsequently introduce a new registration.

Payment Via Compuserve

You must already be a Compuserve member to use this service. **GO SWREG** and follow the instructions for registering shareware. The SWREG ID for this application is **4036**. The cost of this method is **\$30** (THIRTY US DOLLARS).

This amount, translated by Compuserve into your own local currency, will be charged to your monthly Compuserve account. Registering via SWREG automatically triggers a notification to the authors, and your registration will be processed promptly.

You may use your Compuserve SWREG facility on behalf of others if you wish, but please ensure that you provide **their** information when registering, not **yours**! (it would be a good idea to send a private Email to the authors as well, to explain this circumstance).

The authors typically log onto Compuserve at least once per day, and when an SWREG registration is notified you should expect to receive a confirmation message to your own Compuserve account by return (direct from us). If this does not happen within a reasonable period of time please send an Email direct to the authors just in case the notification got mislaid.

Contacting The Authors

The authors of **Soccer ScoreSheet** can be contacted directly via the following means.

Email

If you are a CompuServe member, send Email to **100025,1566**. If not on CompuServe, but you have an Internet account, send Email to **100025.1566@compuserve.com**.

By Post

Send to: **Karen S McKay (Mrs)**
3 Yorkshire Place
Warfield
Bracknell
Berkshire
RG42 3XE
UK

WWW: <http://ourworld.compuserve.com/homepages/AndrewM>

Previous Version Warning

If you are evaluating a shareware version of this application, please be aware that a later version may have been released. That newer version may have changed some or all of the attributes concerning such things as functionality, benefits, and cost.

The authors have no direct control over the shareware distribution channel, and whilst they will use their best efforts to ensure that any earlier versions are removed from the distribution channel, they cannot be held accountable for such a version being made available to any user.

The latest version of **Soccer ScoreSheet** will be that made publicly available by the authors on CompuServe. It shall be this version which the authors will be held liable for meeting whatever terms and conditions there may be. If an earlier version appears to offer you a free lifetime supply of gold and diamonds, then it will basically be hard luck that you missed the opportunity - because the later version definitely will not have that advantage for you.

At all times the latest version shall supercede and obsolete any and all previous versions.

Terms And Conditions

Both the authors *and* the user have obligations relating to this software.

Author Obligations

The authors shall be responsible to the user, and only to that user, for providing the registration benefits to the user upon payment of the full registration fee, as expressed in the section on [registration](#). These benefits (and the [registration fee](#)) may have been modified in a [later version of the software](#) which has been made publicly available (on Compuserve), and thus the authors shall be liable only as expressed within those later terms and conditions. If such a later version should exist then these obligations as expressed herein are null and void.

With the sole exception of defective media which we will gladly replace upon notification and return within 10 days of receipt, this software application is supplied without any warranty whatsoever, either implied or explicit. The authors cannot be held accountable or liable for any problem that installing and/or using this software might present, whether unforeseen or otherwise. If this software wipes out your lifetimes work, or causes your house to catch fire by making the computer work too hard, or any other situation which you aren't pleased as a result of, that's your problem, not ours. We (the [authors](#)) cannot be held liable for any event involving or associated with this software. If you do not like or accept this situation then your only alternative is to discontinue further use of this software.

In no event will the authors be liable for any sum exceeding a single registration payment.

Please note that the [authors](#) operate a policy of automatically assuming that a user with a version of **Soccer ScoreSheet** which is two or more major versions out of date will no longer be interested in receiving newsletters and other notification materials. We can only reasonably support the current version, plus the immediately previous major version, and it is not financially attractive for us to keep mailing notifications to users who are a long way out of date. For example with the currently shipping version being version 8 we will continue to send newsletters to version 7 users and version 8 users. By implication this means that we operate a policy of offering support for a finite period of time which is embraced by the major version launches - this support will be a minimum of six months duration from the time of registration, or subsequent upgrade.

User Obligations

The user is obliged to abide by the terms and conditions of using this software, as expressed herein and in other respective places. They are also required to uphold the shareware concept by evaluating the software for a reasonable period of time, and then either discontinuing using the software -

or paying the required [registration fee](#) to the [authors](#).

The user is also required to protect the bona-fide interests of the [authors](#), and shall not under any circumstance give cause for another unauthorised person to make use of or gain access to the registered version of this software. This includes but is not limited to the uploading of the registered version (or instruction thereof) to publicly accessible bulletin board systems and the like.

The user shall also acknowledge that all rights pertaining to this application, including but not limited to copyright, belong in perpetuity to the [authors](#). The act of registration does not and shall not confer rights to the user beyond that relating to continued permission to use the software beyond the [evaluation period](#). These rights shall never be transferred to the user under any circumstance.

In essence, we request users to respect our interests pertaining to this software, and to treat this with the respect they would have for their own hard work. A significant product such as **Soccer ScoreSheet** takes quite literally thousands of hours of personal development time.

The Association Of Shareware Professionals



This program is produced by a member of the Association of Shareware Professionals (ASP). The ASP wants you to make sure that the shareware principle works for you. If you are unable to resolve a shareware-related problem with an ASP member by contacting the member directly, ASP may be able to help. The ASP Ombudsman can help you resolve a dispute or problem with the ASP member, but does not provide technical support for members' products. Please write to the ASP Ombudsman at:

The ASP Ombudsman
545 Grover Road
Muskegon
MI 49442-9427
USA

Fax: 616-788-2765

Compuserve: ASP Ombudsman - 70007,3536

Thanks To.....

Soccer ScoreSheet and its associated components could never have been produced without the following individuals or companies playing a part, and to whom the [authors](#) are very grateful. These individuals/companies own the respective rights to their particular products. We are of course registered users of all products mentioned - note that we do not only offer shareware products, we actively support the concept ourselves by registering what we use.

We hope that we have given due reference to all those individuals and companies that have helped bring our product together, but just in case we forgot anyone along the way please accept our apologies - we do recognise your copyright with regard to your product, and if you would care to let us know about your omission we will gladly rectify the situation for the next release.

Our Beta Testers!

No matter how hard we try to produce a perfect product, when it eventually gets released to the beta-test team they always manage to collectively find problems that somehow eluded our careful testing procedures.

We are and always will be grateful to these individuals for their help and cooperation in making this product even better. As a matter of policy (to protect the innocent in the event that something unforeseen makes its way through even this rigorous testing phase) we do not identify the individuals concerned. They know who they are, and they know how grateful we are for their time and effort.

Individuals who may wish to be considered as future beta testers should contact [the authors](#). We make no promises about this, but invariably beta-testers are scarce when you most need them.

Inst/Setup

Mr Kurt P. Herzog
1440 N.E. Tenth Street
Grants Pass
OR 97526
USA

CIS ID: 72122,2023
Email: 72122.2023@compuserve.com

Inst/Setup is a [shareware](#) product, available on Compuserve and elsewhere.

We searched long and hard for an easy to use Windows installation utility which would compliment our product in a professional way, and nearly gave

up in the process. Sure, there are a lot of installation utilities out there, but the really good ones didn't seem to be even close to the limits of our budget. And the not so good ones weren't going to compliment our product. Then we found Inst/Easy and our troubles were over. This excellent utility has continued to evolve over time, and we highly recommend it for anyone who might have a need to create Windows installation solutions and who really doesn't want to have to spend a lot of time putting it all together (users of this superb product do not need to have any programming or technical knowledge at all).

EasyHelp/Web

Mr James Holroyd
Eon Solutions
12 Juniper Rise
Upton Priory
Macclesfield
Cheshire
SK10 4XT
England

Web: www.u-net.com/eon
Tel: UK 0973 209667
Fax: UK 01625 827037
Email: eon@cix.compulink.co.uk

EasyHelp/Web is a [shareware](#) product, available on CompuServe and elsewhere.

The help file you are currently perusing was created using this excellent and easy to use package, which works in conjunction with Microsoft Word for Windows. We use it for creating all our help files. If further recommendation were needed, we were already registered users of another shareware product to produce on-line help files which we had been actively using for some time when we came across EasyHelp/Web, and it didn't take much to persuade us that this was the superior product, authored by someone who earns a living from this expertise.

Borland C/C++ For Windows

Borland International, Inc.
100 Borland Way
Scotts Valley
CA 95066-3249
USA

Tel: (408) 431-1000

This whole application was written using the Borland C/C++ for Windows development suite. As any professional developer knows Borland, Microsoft,

and one or two others actively compete for a leadership position in the professional software development tools marketplace. Our continued use of this excellent product stems from historical familiarity as much as anything else. But as we've never been disappointed with Borland we've stuck with it over the last few years.

4Dos and Take Command

J P Software Inc.
P.O. Box 1470
East Arlington
MA 02174
USA

Tel: (617) 646-3975
Fax: (617) 646-0904

We will be the first to admit that neither 4DOS nor Take Command are actually required for the production or use of our product, so we could have left these out and no-one would have been any the wiser. However both 4DOS and Take Command have made our life so much easier over a period of time that that they deserve a mention. Highly recommended as alternative to standard MS-DOS.

Boxer (Text Editor)

Boxer Software
P.O. Box 3230
Peterborough
N.H. 03458-3230
USA

Tel: 800-98-BOXER (800-982-6937)
Fax: (603) 924-4471
BBS: (603) 924-3859

Once again, this product was not strictly necessary for the development of this application as there were other alternatives available. However Boxer is our text editor of choice from several years experience. Very highly recommended as a highly configurable editor to suit almost everyone's requirements (also available as an O/S2 version).

Microsoft Word for Windows

Microsoft Corporation
One Microsoft Way
Redmond
Washington 98052-6399
USA

Microsoft Word for Windows version 6 was used in conjunction with EasyHelp/Web mentioned above to create the Windows on-line help file you are reading.

Microsoft Windows

Microsoft Corporation
One Microsoft Way
Redmond
Washington 98052-6399
USA

During the development process of this application we used Microsoft Windows for Workgroups and Windows 95. And without one or other of these operating systems this application would be completely useless.

De-Installation

We hope that you have enjoyed evaluating **Soccer ScoreSheet**, and even if you do not intend to become a registered user [the authors](#) would be grateful to receive your feedback. Perhaps you were looking for a feature that we don't yet support? Please tell us, as we may be able to consider adding that feature in a future release.

Removing this software from your PC is very simple. Unlike some other applications which you may have experienced this software will not have modified your system files (beyond what we indicate below), and it will not have installed files which you would not be able to find all over your disk.

File Removal

Most of the files used by this application are installed into one sub-directory on your hard disk. This is the directory that you specified during installation when you ran the SETUP.EXE program. Delete this directory and everything it contains.

Other files installed by the installation process depend upon the version of this application that you originally installed. In your C:\WINDOWS\SYSTEM directory one of the following file sets will have been installed. ***Do NOT delete these files in case they are used by another application!***

Windows 3.1: BWCC.DLL + CTL3DV2.DLL

Windows 95: BWCC32.DLL + CTL3D32.DLL

One other file that will need to be deleted is SOCCER.INI, which is installed into your standard Windows directory (the default is C:\WINDOWS\SOCCER.INI).

Windows Groups/Folders

You will also need to delete the Windows group/folder into which **Soccer ScoreSheet** was installed during installation.

Main Dialog

This is the master dialog for the entire **Soccer ScoreSheet** application. Everything starts and finishes from here, by the user selecting available options. Some of these options are not immediately obvious and are implemented as [hidden features](#) - see below. One such feature is the ability for the user to copy information shown on the main dialog to either the Windows clipboard or to a text file of the users choosing. This option is selected by clicking on any part of the main dialog which does not contain a Windows control (button or other object), which immediately presents the [Clipboard Dialog](#). Using this option the page range set by the user relates to the divisions defined in the league.

This dialog is the only place within the application where the league structure and attributes can be defined and modified.

Please note the use of colour within the main listbox on this dialog. These colours are user configurable via the [System Options Dialog](#), and for each team via the [Team Edit Dialog](#). Setting a unique colour for a favourite team will provide an easy visual means of finding that team on this dialog.

The following assets of the dialog are taken in left to right, top to bottom order.



This combobox allows the user to select the active league. Whilst it is possible for more than one league to be defined (thus giving multiple entries for selection in this combobox) the authors recommend having only one league per data file (multiple leagues may give rise to resource shortages within the MS Windows environment). It may also be apparent that the application will become slower as more leagues are added.



Clicking this button allows the user to add a new league definition, using the [League Dialog](#). If a league is active when this button is selected **Soccer ScoreSheet** will offer the opportunity of copying the existing league definition (registered users only), so that the new league will have the same structure in terms of divisions, teams and points awarded as the already defined league. Each team definition will also be modified so that the data relating to last season is automatically reflected as being the league which was copied.

Copying a previous league is obviously useful at the end of one season and in preparation for the next. Although several teams will have moved up/down between divisions most will remain in the same division - it will only be necessary to edit each team which has changed, and modify the division to that which it has been transferred to.



Clicking this button will delete the currently selected league. This will require

confirmation by the user. If this action is confirmed the league and all of its parts is irretrievably purged from the database.



Clicking this button allows the user to edit the currently selected league definition via the [League Dialog](#).



This combobox allows the user to select the division within the league which is to be displayed on the main dialog. This change only affects the presentation of detail on this dialog, and will be automatically reflected in the team listbox.



Clicking this button allows the user to add a new division to the currently selected league, using the [Division Dialog](#). Initially this division will have no teams defined - this will require teams to be added.



Clicking this button results in the currently selected division and all of the associated teams to be deleted from the database. Confirmation of this action will irretrievably purge the division and teams from the database.



Clicking this button allows the user to edit the currently selected division definition, using the [Division Dialog](#).



This logo (which is in fact a button) provides access to a hidden feature of the main dialog - clicking on it accesses the [System Options Dialog](#), from where a number of system-wide options can be set.



Clicking this button will allow the user to add a new team to the currently selected league and division, using the [Team Dialog](#). If necessary this team can be moved between divisions by re-editing the team definition.



Clicking this button will delete the currently selected team and all fixtures associated with that team from the database. Once confirmed by the user this will be an irretrievable action.



Clicking this button will allow the user to edit the currently selected team definition, using the [Team Dialog](#).



These buttons allow the user to change the currently selected page. **Soccer ScoreSheet** has eight pages in total, all of which are completely configurable by the user to show exactly the detail they wish (via the [Configuration Dialog](#) described below).

August 12, 1995

Underneath the team listbox are two dates which represent the start and end of the season. Usually these dates will automatically update to reflect the fixtures defined in the database, however it is possible that the user will wish to see the league table as it was for only part of the season. To do so click on the date (either start or end) and select a new date from the [Calendar Dialog](#). This will cause the league table to be updated, after which the main dialog will show the table according to the dates selected.

Note that changing the date is only a transitory situation. The next time the application needs to modify the league table (an automatic process when any relevant change has been made to the database) these dates will revert to the true start/end of the season.

Exit

This button provides the only exit from the application, and on completion of using the application the user should always terminate using this option before closing Windows down.

File

This button allows the user to either save the current database (all leagues which are defined will be saved), or load a new definition. This is achieved via a further selection on the [File Dialog](#).

Note that **Soccer ScoreSheet** automatically saves the database whenever a modification is made (this only occurs when on the main dialog), and thus it is not necessary to perform the save action every time - save is more useful in the context of saving to a new database file, perhaps for backup purposes.

Fixtures

This button provides access to the fixture definitions.

Predict

This button provides access to the prediction functionality of the application, via the [Prediction Dialog](#).

Summary

Clicking this button allows the user to print a hardcopy of a division summary report. This shows a table of home/away results to give instantaneous access to the result of league matches played between two teams (in the same division). The result and date of the match are shown in two separate tables on the same page.

Note that the printer selection dialog which follows selection of this button will request a page range. Page 1 is the first division in the league, page 2 the second division, and so on. Thus to print a summary for one division only define the page range according to the division rank in the league (this can be gleaned from the division selection combobox).

Print

Clicking this button allows the user to print a hardcopy of the page which is currently selected for display on the main dialog (as shown in the team listbox). Multiple, or all, divisions can be printed at once if required - see the comment for the summary report given immediately above.

Config

This button allows access to the team listbox page [Configuration Dialog](#), where all of the pages can be defined according to the users personal preference.

Help

Clicking this button accesses this on-line help. Requesting help from any dialog will always result in help being offered for the dialog which is currently being negotiated.

Team Listbox

A [hidden feature](#) of this listbox is that double-clicking any team shown in the listbox will provide immediate access to the match history for that team, via the [Team Review Dialog](#).

Hidden Feature

A 'hidden feature' is a function which is not readily identifiable to the user. To save cluttering of the application dialogs with multiple buttons these features have been made available via other means, but still using standard MS Windows features.

Evaluation Period

Soccer ScoreSheet is released under the [shareware](#) concept, to allow the user to satisfy themselves that the application meets or exceeds their personal needs. If it isn't useful to you then just discontinue use and delete it from your system.

This is not free software! During the initial shareware evaluation period (45 days) the application will be fully functional. Towards the end of the evaluation period the user will begin to receive advisory messages that the evaluation period is nearly over. Once this period is over then the application will prevent access to some non-critical functions and will annoy the user with pop-up message boxes advising of the expired shareware status, plus print a heavy watermark over all printed reports.

Please support the shareware concept by [registering](#) the shareware that you find of use. Thank you!

The Draw Window

The **Soccer ScoreSheet** draw window is a concept which embraces the idea that any match yet to be played will result in only one of three possible results - a win for the home team, a win for the away team, or a draw. If we ignore abandoned matches then no other result is possible.

This application evaluates all matches by applying user-configured mathematical algorithms to produce a numerical value. If the value is large and negative then the prediction concept suggests that the away team has the advantage in the match. If large and positive then the home team is reckoned to have the advantage. And if a relatively small value (positive or negative) is the result then the teams are considered to be relatively even based upon the algorithmic predictions. Those predictions are always based upon team form information.

The draw window is the user-defined (via the [Graphical Analysis Dialog](#)) 'window' within which any matches which produce a mathematical result which fall within this area will be considered to be predicted draws.

Information Messages

These messages may be presented to the user during normal operation via a pop-up message box in order to convey information. The pop-up message box will show an identification number in its title bar, which may be referenced to one of the following.

501

Shown by the [Prediction Dialog](#) to advise the user that as they have no perm defined the auto-fill function cannot work. This function requires that the user has defined a perm arrangement via the [Perm Configuration Dialog](#).

502

Presented by the [Welcome Dialog](#) whenever the [non-registered](#) user enters a user name which is not validated by the serial number. This action will incur a time penalty of freezing the application for several seconds.

503

This message will only ever be shown to the user once via the [Welcome Dialog](#), to advise that the user is now a [registered](#) user. Thereafter the Welcome Dialog will automatically clear itself after the initial startup delay.

504

This message is presented to advise the user that the version being [evaluated](#) is a [shareware](#) version.

505

This message is presented to advise the user that the version being used is a licensed version which may not be distributed or made available to others under any circumstance.

506

This message advises the user that the print operation was halted prematurely due to user intervention.

507

This message is shown by the [non-registered](#) version as the application is closing down, to remind the user of the shareware status.

508

This message is shown by the [non-registered](#) version once the [evaluation period](#) has completed. This will be presented to the user frequently during

use until such time as the user chooses to [register](#).

509

Once the [evaluation period](#) is complete some functionality will cease to work. If the user selects one of these options this message will advise of that status. [Registering](#) the [shareware](#) will re-enable these functions to the state they were prior to the evaluation period coming to an end.

510

If the [non-registered](#) user selects the option to add a new league they will not have the capability to copy the currently selected league definition (this option saves a great deal of work for the user). This message advises of this status.

511

As the [evaluation period](#) for the [non-registered](#) version nears an end this message will be presented once only per session as the application starts up, to advise the user that the evaluation period is coming to an end.

Confirmation Messages

During normal use the user may select an option which the application wishes to confirm being taking the required action. This would normally require a positive response to continue, however selecting a negative response provides a means of preventing the action. In all cases if the action is confirmed then it will not be possible to undo the operation.

Note that confirmation action is directly affected by the option to enable confirmation set via the [System Options Dialog](#). If disabled then most confirmations will not take place, and selecting the option will proceed without delay.

Confirmation messages are provided to the user via a pop-up message box, and require the user to select one of the options presented (usually of a yes/no variety). The title bar of the message box will include one of the following message numbers.

1002

Requests confirmation for saving configuration information to a file. Confirming this action will overwrite any existing file having the same name.

1003

Requests confirmation for loading configuration information from a file. Confirming this action will replace the existing definitions.

1004

Requests confirmation on whether to duplicate the currently selected league structure. This is available for [registered users](#) only, and is the result of selecting the option to add a new league from the [Main Dialog](#).

Confirming this request will result in a new league definition which has all of the divisions and teams from the existing league, and each teams last season statistics will automatically be updated from the previous definitions current season, making this an ideal way to begin a new season.

Denying this request will simply create a new league without any division or team information (default for [shareware](#) version).

1005

Requests confirmation for deleting the currently selected league. Confirming this action will delete all of the divisions, teams, and matches for the league. Presented when the user selects the delete league option from the [Main Dialog](#).

1006

Requests confirmation for deleting the currently selected division. Confirming this action will delete all of the teams and associated matches for the league. Presented when the user selects the delete division option from the [Main Dialog](#).

1007

Requests confirmation for deleting the currently selected team. Confirming this action will delete the team and associated matches for the league. Presented when the user selects the delete team option from the [Main Dialog](#).

1008

Requests confirmation for deleting the currently selected fixture. Presented when the user selects the delete fixture option from the [Fixtures Dialog](#).

1010

Requests confirmation for calculating new prediction values, which will overwrite the existing values. Presented when the user selects the Calculate button from the [Prediction Dialog](#).

1011

Requests confirmation that the user wishes current selections to be cleared.

1012

Requests confirmation that the user wants to save current perm settings to a file. Confirming this action will overwrite any existing file having the same filename.

1013

Requests confirmation that the user wants to load new perm settings from a file. Confirming this action will replace the existing perm definitions.

1014

When closing the [System Options Dialog](#) this message box will be presented to confirm that the user accepts that the system will be much slower with the re-calculate team positions flag having been set. On fast machines this will probably be acceptable - but on slower machines the effect could be pronounced.

Error Messages

From time to time the user will select an option that would result in an illegal operation. Usually this is due to some action the user needs to take prior to invoking the option (such as selecting one of the teams etc.), but it is possible that this could be due to misbehaviour on behalf of the application (if necessary please report such incidents to the [authors](#)).

When this occurs the application will pop-up a message box indicating the nature of the problem. The title bar of the message box will include one of the values explained below.

3002

This message informs the user that the application could not duplicate the league definition as requested. This will be the result of selecting the option to add a new league from the [Main Dialog](#), and confirming that the existing league should be duplicated ([registered](#) users only).

It is possible this could be caused by a shortage of resources within the MS Windows environment, for example if the Windows environment is short of memory. Thus if you have many applications open (or another application which may be consuming a great deal of resources), try closing those applications and try again.

This is a relatively serious error - if it does occur please inform the [authors](#), who would appreciate a copy of your data file for analysis purposes if possible.

3003

The user has selected an operation which requires that a league be selected, and no league is currently selected.

This is not a serious error. Select a league, and try again.

3004

The user has selected an operation which requires that a division be selected, and no division is currently selected.

This is not a serious error. Select a division, and try again.

3005

The user has selected an operation which requires that a team be selected, and no team is currently selected.

This is not a serious error. Select a team, and try again.

3006

The user has selected an operation which requires that a fixture be selected, and no fixture is currently selected.

This is not a serious error. Select a fixture, and try again.

Check This Out.....



Soccer ScoreSheet has a lot of features, some of which will not be immediately obvious. This section will hopefully point you towards the major features which you might find useful.

But I Don't Do The Pools.....

And nor do a lot of other people, so don't worry! We try our best not to make **Soccer ScoreSheet** look too much like a pools prediction program for two very good reasons. The first is that if we told you this was a pools prediction program you might even believe us, and start spending money which you wouldn't otherwise do - and we do not want to be responsible for setting an expectation which probably would not repay you (no computer program can ever predict match results with great accuracy before the matches are played!).

The other reason is that **Soccer ScoreSheet** really is two applications in one. We know for a fact that many people (and recently several football clubs too) use this application just for keeping their league information up to date, without the need for prediction facilities. That's absolutely okay - **Soccer ScoreSheet** was designed specifically to manage league information, and the prediction features were almost an add-on.

Hidden Features et al.....

There are several hidden features of this application which you will not discover unless you read the on-line help file (that's the help you are reading right now.....), and we therefore highly recommend that you take the time to review the on-line help for every dialog you visit. This will obviously take a little time, but we often get queries from users who put forward a suggestion for an improvement - and the feature they really want to see has been there all the time!

Colour Coding

Many options within the application are made available with colour coding. These colours can be modified via the [System Options Dialog](#). So if you find that your monitor seems to display some colours in a hue that you do not find easy to work with, you can change these colours to suit your setup and preferences.

Recalculating Team Positions Each Week

Whether or not you may find it useful, **Soccer ScoreSheet** is able to recalculate team positions within the league on a weekly basis - you can

even set which day of the week to do the recalculation on. This is enabled/disabled via the System Options Dialog. Please bear in mind that enabling this option will have a noticeable effect on league table recalculation, most especially on systems with a slow CPU speed - the calculation involved in sorting out league positions is very intensive. Therefore unless you have the bees knees of a CPU we only recommend enabling this if you really need it. Try it out anyway - if it is too slow for you then you can disable it again.

Configurable Team Pages

There are 8 different pages of statistical information available on the [Main Dialog](#), and every one of the 12 columns on each page is user-configurable via the [Configuration Dialog](#). Therefore you can show any mix of 96 different statistics you want to see.

It's An Automatic.....

We've tried to make everything that can be automatic, automatic. That means that obvious things like league table regeneration whenever something in the database changes will just take place at the appropriate time without you having to do anything. This applies to things like calculating the pools points on your pools coupon too - if you tell **Soccer ScoreSheet** which selections you have made on your coupon at the time you send in the coupon, when the results come in the application will automatically calculate the maximum points you scored.

We Are Only Human!

If you notice something that could be improved upon, please [tell us](#). We do take notice, and this does lead to enhancements for everyone's benefit. We try to make sure that this software is of high quality and as bug-free as it is possible for us to make it.

Referral Fees And Guarantees

As a registered user, if you then introduce a friend as a new registered user we will be happy to [reward](#) you for that activity. We also operate a [full refund guarantee](#) if you aren't delighted with the registered version you receive.

Clubs and organisations should contact us about this arrangement - we would be happy to consider using this referral feature to assist with their private fund-raising if appropriate.

System Options Dialog

The system options dialog is accessible only from the [Main Dialog](#), and is used to set several system-wide options which affect the way the application behaves or shows detail. Each option offered is explained below.

Show scores for recent form?

The user has the option of defining any column(s) for any page within the team listbox on the [Main Dialog](#) to represent recent form. These columns can depict *either* a score (if this checkbox is checked) *or* a generic type of result (H=home win, A=away win, etc.).

This option has no effect on the actual data within the database, only the representation of that data.

Auto-scroll listboxes at top/bottom?

Placing a checkmark against this checkbox will enable **Soccer ScoreSheet** to intelligently move the contents of a listbox by one row if the user clicks on an entry at the top or the bottom of the listbox. If there is detail beyond that limit in the listbox then the listbox is scrolled by one item to show the next item.

This option makes it easier to negotiate the listbox, for example when moving through the league table, as the user only needs to keep the mouse pointer in the same position to cause detail to scroll into view (this is not standard Windows behaviour).

Auto-move cursor on listbox scroll?

Placing a checkmark against this checkbox will allow the application to physically move the mouse pointer whenever the listbox is auto-scrolled (the auto-scroll feature just described must be enabled). This may be desirable for example when entering results. When the listbox is auto-scrolled to bring a new item into view this option will allow the mouse pointer to stay in line with the option which was clicked on (this is not standard Windows behaviour).

Always ask for confirmation?

Several options provided by **Soccer ScoreSheet** change or delete data in a way which is not reversible. If this option is checked then the application will ask for confirmation prior to carrying out the action.

Selected Team Removed (Fixtures)?

Checking this option allows the [Fixtures Dialog](#) to remove teams from the team listbox when they are selected to play in a match. The unchecked state allows these teams to remain in the listbox, but they are disabled (no longer available for selection). This does not affect the team selection functionality - only the presentation.

Recalculate team positions every week?

If this option is checked then each time the league table is recalculated detail will be recorded about the physical team position in the table on a specific

day each week (as selected from the radiobuttons described below). However the drawback of doing so is that it takes rather more time to perform these calculations and on a slow processor this could be extremely tiresome.

Leaving this option unchecked will provide for the fastest league table recalculation, but it will not allow use of the team position (or position change) detail.

Note that this option enables/disables the weekday selection buttons explained below. These will have no effect in the event this option is not checked.

Recalculate Positions On WeekDay

These radiobuttons allow the user to set the weekday on which the team positions will be recalculated. This will be the team positions at the close of play on that day. So if for example the radiobutton for Sat(urday) was checked then the league table would be recalculated for the entire season, and the team positions at midnight every Saturday would be entered in the database.

Note that these radiobuttons are only enabled in the event that the user has checked the team positions checkbox explained above.

Results

These buttons allow the user to define their own colour preferences for the results depicted in colour via the prediction capabilities of the application. It is difficult to provide a generic set of colours that will work satisfactorily on all equipment, and thus the user is free to define those colours which work best for them on their own equipment.

Calendar

These buttons allow the user to define their own colour preferences which will be used on the calendar dialog to depict fixtures against dates. These colour codes enable immediate identification of dates with missing results and so on.

ListBox

These buttons allow the user to set the generic colour scheme for listboxes used throughout the application. Only three options need to be defined - the listbox background colour, the 'normal' colour, and the 'disabled' colour.

Please note that changing the normal and disabled colours will not affect the colours relating to team presentation. This is because each team has its own set of unique colours definable via the [Team Edit Dialog](#).

OK

This button returns control to the [Main Dialog](#).

Help

This button provides access to this on-line help.

Team Review Dialog

The team review dialog is accessible only from the [Main Dialog](#), and is used as a quick reference to a particular teams match history. It is highly configurable for the detail which is to be shown to the user.

There is a [hidden feature](#) available on this dialog - double-clicking on any fixture shown in the listbox will automatically provide the [Match Review Dialog](#) so that the user can compare the form of both teams in that match.

Another [hidden feature](#) of this dialog is the ability to copy the detail shown to either the Windows clipboard or a text file of the users choosing, so that this detail can be used by another application. This functionality is accessed by clicking on an empty area of the team review dialog (where there are no buttons, listboxes, and so on), resulting in the [Clipboard Dialog](#) being presented.

Note that the colours used within the listbox on this dialog are user configurable, via the [System Options Dialog](#), and also for each team from the [Team Edit Dialog](#).

Invert Date Order

This checkbox allows the user to set either an ascending or descending date order for the presentation of the fixtures in the listbox above.

Include In Summary

This group of checkboxes allows the user to specify exactly what to show in the listbox above. It is possible to include/exclude all match types, and also to include/exclude home and away detail.

Note that the actual legends for the match status shown here will be dependent on whatever the user has defined for these via the [Configuration Dialog](#).

Return

Clicking this button returns control to the [Main Dialog](#).

Print

Clicking this button allows the user to print a hardcopy of the information shown in this dialog.

Help

Clicking this button accesses this on-line help.

File Dialog

The file dialog accessible from several other dialogs which have an option for loading and saving of detail. This provides the means of loading and saving files for the **Soccer ScoreSheet** application.

Save

This button allows the user to save the current definition to a new or existing file.

Load

This button allows the user to load a new definition from an existing file. This will replace the currently loaded definition.

Help

This button is used to access this on-line help.

Cancel

This button is used to cancel the load/save operation prior to any action taking place.

Calendar Dialog

The calendar dialog is a utility dialog popped-up by several other dialogs to allow the user to select a valid date.



These date buttons (only a subset shown here) allow the user to select a particular date from the month currently on display. To select a date the user simply clicks on the date of interest.

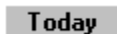
Note the use of colour coding. The actual colours used on this dialog are user-configurable via the [System Options Dialog](#), and represent the status of the matches available on a given date. This allows the user to see immediately whether any matches in the fixture list have been missed for results purposes, and whether or not a particular date has been marked in the fixture list as being a pools date.



This button allows the user to move the calendar back one complete year from the month currently on display.



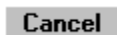
This button allows the user to move back one month from that shown.



This button allows the user to immediately set the calendar dialog to today's date, but without actually selecting that date.



This button accesses this on-line help.



This button cancels the date selection process.



This button moves the calendar dialog forward by one month from the current month on display.



This button moves the calendar dialog forward by a complete year from the current month on display.

Fixtures Dialog

The fixtures dialog is accessible only from the [Main Dialog](#), and is where all of the fixture detail is added, modified or deleted.

The user should note that the fixture listbox (the one on the left) will respond and update with a single click of the mouse button. This may tend to be a little unfamiliar to some users, however it quickly becomes an adopted practice.

Colours are used effectively on this dialog to represent certain conditions. These colours are user configurable via both the [System Options Dialog](#), and for individual teams via the [Team Edit Dialog](#).

A [hidden feature](#) of this dialog is the ability to copy the fixtures detail to either the Windows clipboard or a text file of the users choosing, so that this detail can be used by another application. This functionality is accessed by clicking on an empty area of the fixtures dialog (where there are no buttons, listboxes, and so on), resulting in the Clipboard Dialog being presented.

Fixture Listbox

The fixture listbox on the left contains all of the information necessary to describe the fixture. Updating of this listbox with new fixtures is described via the team listbox in the help section below. Each of the columns of this listbox are described as follows.

P

This column indicates to **Soccer ScoreSheet** whether the match is to be included on the pools coupon or not. If the user is using this application in support of their pools competition entries then they will need to take care to ensure that only those matches that *are* on the coupon are checked here.

It is essential to understand that 58 matches are defined as being pools matches, regardless of how many there may be on this dialog for a particular date. More or less than 58 will definitely impact the prediction facilities within this application.

To change the state of the checkmark use a [hidden feature](#) - simply click (once) on the checkbox.

Cpn

This column shows the pools coupon number for the match, but only if the 'P' column just described has been checked.

Status

This column shows the match status. When first defined a match should have a status of unplayed - that way the prediction and recalculation facilities will

effectively ignore the match because the result is assumed to be invalid.

Do not set any match to type 'League' unless it is in fact a league match! The reason is that this application will include any league match in the league table recalculation whenever that occurs, and if a non-league match does get included the league table will not reflect reality.

Home Team

This is the name of the team playing at home. Obviously in some competition games neither team will be at home, so in those cases the user will need to use their own discretion about which to place in this column.

h - a

This column shows the score of the home and away teams - but only if the user has set the status column to be anything but unplayed status.

Updating the score is achieved via a [hidden feature](#) by clicking on the value with the left mouse button to increment, and right mouse button to decrement.

Away Team

This is the name of the team playing away. Similar to the home team, in those competitions where there is neither a home or away team it will be necessary to use judgement in some cases about which team to declare home, and which away.

Team ListBox

The team listbox on the right hand side of the dialog is used to select teams for matches. By default these entries are colour coded to reflect whether the teams are available for selection, or whether they have already been selected for the current date, however the user can modify this presentation style via the [System Options Dialog](#) so that when a team is selected into a match it is not shown in this listbox.

Adding a match to the current fixture list is very easy. First double-click the team name for the home team, then double-click the away team. Repeat this process for all matches in the fixture list.

Prev Div

This button allows the user to cycle the currently displayed team list to the previous division. If at the top of the division list this will wrap round to the last division in the list.

Next Div

This button allows the user to cycle the currently displayed team list to the next division. If at the bottom of the division list this will wrap round to the first division in the list.

Date

Use this button to select another fixture date. This will present the [Calendar Dialog](#) from where the date can be selected.

Review

Use this button to bring up the [Match Review Dialog](#). This enables the user to compare the form of the two teams playing each other.

Delete

Use this button to delete the currently selected match in the fixture listbox. This will automatically re-enable the two teams for selection in the team listbox.

Insert

Use this button to insert a new match before the currently selected match in the fixture listbox.

The user does not need to insert matches except where absolutely necessary. The application will automatically search for empty (inserted) slots in the fixture list and if none are found the matches will be appended to the end of the list.

Return

This button returns the user to the [Main Dialog](#). If necessary the application will then proceed to automatically recalculate the league table based upon changes that were made within the fixture dialog.

Status

This button will change (increment) the match status for all matches in the fixture list, thus making it unnecessary to manually change each entry separately.

Print

Use this button to print a hardcopy of the fixture list.

Help

This button accesses this on-line help.

Match Review Dialog

The match review dialog is accessible from several other places within **Soccer ScoreSheet**, for example the [Fixtures Dialog](#), [Team Review Dialog](#), and the [Prediction Dialog](#). Its purpose is to provide a quick reference to the form of the two teams playing each other in a match.

The detail shown in this dialog is exactly as for that shown on the [Main Dialog](#) team listbox, and is fully configurable by the user.



Use this button to return to the dialog which initiated the match review dialog.



Selecting this button will move the match review dialog to the previous match in the list.



Selecting this button will move the match review dialog to the next match in the list.



This button selects this on-line help.



These checkboxes show the state of the pools selection columns as set via the [Prediction Dialog](#). Depending on where the match review dialog was called from these checkboxes may or may not be enabled for updating.



These buttons allow the user to cycle the current page number to show different detail for the teams. These pages are exactly the same as those available on the [Main Dialog](#), and are configurable by the user.

Prediction Dialog

The prediction dialog is only accessible from the [Main Dialog](#), and is used in conjunction with football pools competition support options (this is completely optional on the user, who does not need to be a pools enthusiast in order to obtain good service from this application).

This dialog will at first appear to be quite complex, but with a little perseverance it will become straightforward to understand. In essence it does nothing more than present detail in an informative way. One of these methods is via the use of colour, and like many other features of this application these colours are user configurable via either the [System Options Dialog](#), or for each team via the [Team Edit Dialog](#).

Prior to making use of this dialog it is necessary for the user to have defined fixtures for the date(s) for which this dialog is to be utilised. And those fixtures, whether played or not, have to be declared as football pools matches by checking the 'P' column in the fixture listbox of the [Fixtures Dialog](#). **Failure to do this will mean that no matches will appear in the prediction dialog!**

A [hidden feature](#) of this dialog is the ability to copy the prediction details to either the Windows clipboard or a text file of the users choosing, so that this detail can be used by another application. This functionality is accessed by clicking on an empty area of the prediction dialog (where there are no buttons, listboxes, and so on), resulting in the Clipboard Dialog being presented.

In explaining the dialog below it is split into sections, with the explanation proceeding from left to right and top to bottom.

Prediction ListBox

The main component of this dialog is the listbox which occupies the top half of the dialog. Within this are shown the fixtures defined as being football pools matches (non pools matches are not shown at all). Each of the columns are explained below.

Each of the matches depicted in this listbox should have a one-to-one relationship with the pools coupon - without that this dialog is not going to be very useful.

Cpn

This column gives the pools coupon number for the match. Usually this is in ascending order, but the user may have modified this order with the 'Sort' button explained below.

A - H

These eight columns represent the check columns on the pools coupon, in which entries are marked for submission. And just as on the pools coupon these boxes can be marked with your pools selections - just click once on any box and it will check/uncheck.

Note there are up to four sets of perms which can be defined, and thus four different sets of selections can be made. The currently perm set is defined via the 'Perm' radiobuttons underneath this listbox.

Home Team

This column gives the home team name for the match.

h - a

This column gives the home and away score for the match (note: only if the match has been given a status other than 'unplayed' - this is changed via the [Fixtures Dialog](#)).

Away Team

This column gives the away team for the match.

Actual

In this column coloured boxes will appear once the match has been played and the result is validated (via the [Fixtures Dialog](#) changing the match status). These colours are user configurable via the [System Options Dialog](#) to suit personal preference. Furthermore this column shows the number of points awarded for the result, as set via the [League Edit Dialog](#).

Note that this column represents the actual result, and is not influenced at all by any prediction criteria.

Predict

This column represents the predictions that the application makes about the match according to the criteria that the user has defined. In an ideal world this column would accurately reflect the 'Actual' column described above and the colours would match up, however that is probably unlikely to happen all the time because soccer is not perfectly predictable - if it were there would be no need to play the matches! The best that can be hoped for is that most of the time most of the matches will behave in a reasonably predictable way.

This application makes no attempt to distinguish between a no-score or score draw for prediction purposes, and thus all draws will be depicted in the same colour.

In order for this column to show anything other than away wins (which is a default condition) the user will have had to set up his/her prediction algorithm(s) via the [Algorithm Dialog](#), and then selected the 'Calculate'

button which is described below. *This is not an automatic process!*

Note that only one set of prediction results are shown in this column at a time. There are four algorithms which can be set up (only a minimum of one need be used - this is optional on the user). The currently selected algorithm is the one shown in the listbox.

Perm
<input checked="" type="radio"/> 1
<input type="radio"/> 2
<input type="radio"/> 3
<input type="radio"/> 4

These radiobuttons allow the user to select which perm arrangement should be current. The user does not need to define all four - it would be perfectly acceptable for just one perm set to be defined.

Four perm arrangements have been made available in order that the user can make direct comparisons between different perm arrangements, without having to keep changing the perm settings around.

Col	A	B	C	D	E	F	G	H
Curr	-	-	-	-	-	-	-	-
Best	-	-	-	-	-	-	-	-
From	-	-	-	-	-	-	-	-
Draws	-	-	-	-	-	-	-	-
Pts	-	-	-	-	-	-	-	-

This statistics box shows the user information about the columns selected (A-H) and the current perm arrangement. This will total the points scored for each checkbox column according to the perm which has been defined via the [Perm Configuration Dialog](#).

Pred	<input checked="" type="radio"/> 1	<input type="radio"/> 2	<input type="radio"/> 3	<input type="radio"/> 4
Hm	22	-	-	-
Dr	22	-	-	-
Aw	14	58	58	58
%Acc	43	32	32	32
Pts	-	Wnd 15.5	Cpn 24.0	

This statistics box shows the user information about the predictions made by the prediction algorithms. Up to four algorithms may have been defined by the user, though this is completely optional.

The lower part of this box (the bottom row) has no direct relevance to the information above. The 'Pts' value is the maximum pools points the user has acquired with his current selections (taking into account that the perm arrangement will have discounted several entries automatically). The 'Wnd' value is the maximum pools points available in the draw window. And the 'Cpn' value shows the maximum pools points that were available on the entire coupon.

Date

This button allows the user to select a new date for prediction purposes.

Statistics

This button accesses the Pools Coupon Statistics Dialog, which gives a graphical representation of the 'hot' and 'cold' pools numbers according to the number of draws and wins against each coupon number. In theory this should be meaningless because statistical analysis should predict that all numbers have an equal bearing on the results - but in practice it seems not to be the case!

Calculate

Use this button to invoke a recalculation of the prediction values. The application will never attempt to modify the predictions made, so the user must always use this for each fixture date.

Note that this option automatically recalculates all of the predictions at once, for all four of the algorithms. These algorithms are as defined via the [Algorithm Dialog](#).

Fill Perm

This button allows the user to automatically fill the pools coupon entries using a random number technique combined with the draw window. It will use its best efforts to fill only the draw window entries, however if the algorithm cannot find enough entries in the draw window then it will seek to fill any of the coupon numbers.

The coupon perm definition will be as described via the [Perm Configuration Dialog](#).

Clear

This button clears all of the coupon entries at once, which will be a convenient way of starting the pools coupon all over again.

Sort

This button toggles the sort order of the prediction listbox. Normally the order is as per the coupon number, however it may be more useful to the user when selecting their coupon entries to show the coupon ordered by the prediction algorithms. In this substitute sorting order the predicted home wins will be at the top, the draws grouped together in the middle (somewhere!), and the away wins at the bottom of the listbox.

Return

This button returns control to the [Main Dialog](#).

Graph

This button accesses the [Graphical Analysis Dialog](#), where actual and predicted results can be directly compared to see how well the user-configured algorithms are performing.

Algorithms

This button provides access to the [Algorithm Dialog](#), where the user can configure their own algorithms to provide predictions.

Perms

This button provides access to the [Perm Configuration Dialog](#) where the user defines their own perm arrangement. Up to four completely separate perm arrangements can be defined.

Print

This button allows the user to print a hardcopy of the coupon information presented by the prediction dialog. This can be used directly with results analysis whilst results are arriving.

Help

This button accesses this on-line help.

Graphical Analysis Dialog

This dialog is only accessible from the [Prediction Dialog](#), and is used to directly compare predicted results with actual results. This dialog is also used to set the upper and lower limits of the [draw window](#), which is shown as a dark gray area on the background of the graph. The idea behind the draw window is to keep that area as narrow as possible (this will tend to reduce the number of suggested draws on the pools coupon), whilst keeping as many of the actual draws which occur within the window (this will tend to increase the number of suggested draws on the pools coupon). Obviously this is a trade-off situation, but with some experimentation reasonable results can be achieved.

Setting The Draw Window

Setting the [draw window](#) is very easy - just click on the graph at the point where you want the upper or lower limit to be moved to - the nearest of either the upper or lower limits to this point will physically move to the new point, plus the statistical information underneath will be updated.

Ideally the user should aim to set as narrow a draw window as possible whilst still embracing as many of the drawn results as possible. Then when further predictions are made by the algorithms about games yet to be played hopefully only a small subset of the 58 matches on that pools coupon will be suggested as draws - these will be the matches that fall into this draw window.

Obviously setting a draw window the entire width of the graph is possible, but that would indicate to the application that regardless of the predictions made by the algorithms **all** matches will be predicted as draws.

Graph Description

The horizontal axis of the graph represents the prediction horizon. If the algorithms worked perfectly then the away wins would be grouped on the left hand side, the home wins on the right hand side, and drawn games would be grouped in the centre of the graph.

The vertical axis of the graph represents a notional frequency value - the higher the bar on the graph, the more matches resulted in a particular match result at that horizontal point on the graph. As with the horizontal axis there is no absolute scaling values - there is no need. All that needs to be considered with this technique is relative positions and heights across the graphs spectrum.

The vertical bars which make up this graph are colour coded - these colours can be set by the user via the [System Options Dialog](#). Let us assume in the following description that **away wins** are shown as green bars, **home wins** are blue bars, and **draws** as red bars (there is a distinction between 0-0, 1-1,

and high-score draws available, but for now assume all draws are in the same colour for simplicity). *These colours may not be representative of your configuration.*

Note that the sizes of the coloured boxes on the graph are relative to the pools points awarded for that result, and the relative size of (for example) a blue box to a red box is in direct proportion to the pools points awarded for these two different results. Typically it should be expected that the draws would be visually larger than wins in terms of box mass.

In an ideal world where the prediction algorithms worked perfectly all of the green bars would be grouped at the left end, the blue bars at the right end, and the red bars in the middle, with little or no overlap. That will probably seldom happen - but it is interesting to note that the application of a simple algorithmic prediction based upon home and away goal difference will tend to indicate the actual results do fall into this general pattern (there will be quite a lot of overlap however).

Prediction Algorithm

These radiobuttons provide the user with the ability to change the prediction algorithm, so that the different results can be compared. If the user has set up more than one algorithm (up to four are available) then a different graph can be shown for each. This may be useful in determining which algorithm gives the better result over time.

Selection Checkboxes

Immediately underneath the graph are five checkboxes with which the user can indicate which type of results to include or exclude from the graphical analysis. If a box is unchecked then the corresponding match result coloured boxes are removed from the graph. Thus it is instantly possible to identify which type of match result is performing reasonably well from the prediction algorithms settings.

Points in graph

This value indicates the total number of pools points in the entire graph, based upon all of the games and all of the results included in the search for results. This is given simply for informational purposes.

Points in window

This value indicates the total number of pools points which fall within the draw window. This value will update as the draw window is adjusted by the user (by clicking on the graph itself). The wider the draw window, the more points will be within the window - but the trade-off is that more predicted draws will be presented when trying to prepare a pools coupon for submission.

Percentage

This is the percentage of points which are within the draw window against the total points shown in the graph. This is in fact quite an important piece of

information, as experience has shown that having this value around the 80% mark will tend to produce meaningful predictions for pools entry purposes. However, some weeks will always be better than others.

Return

Click on this button to return to the [Prediction Dialog](#).

Help

Click on this button to access this on-line help.

March 30, 1996

These start and end date buttons provide the user with a means of defining the range of dates to include in the analysis. Either a single date can be defined (where start and end dates are the same), or a complete season of results can be analysed.

Clicking on either of these buttons will present the [Calendar Dialog](#), from where the appropriate date can be set.

Statistics Dialog

The coupon statistics dialog is only accessible from the [Prediction Dialog](#), and is intended to show the user details about which lines on the pools coupon appear to be favourable for achieving most pools points. Please note that the colours shown on this dialog can be adjusted to suit user preference via the [System Options Dialog](#).

The first thing to note is that this dialog never adjusts or manipulates the values provided. Unlike some other representations shown by the application (notably those involving the prediction algorithms which do calculate values) the values shown are either counts or accumulations of factual data, and thus the result is meaningful.

The idea behind this dialog is that some pools coupon lines appear to yield on average more pools points than others, and however unlikely this might seem the facts do speak for themselves. This dialog can therefore suggest (and it is only a suggestion!) which coupon lines might be preferable to place marked entries on, and which to avoid.

Simple statistics should tell us that all 58 lines on the pools coupon should have equal weighting for scoring pools points - after all the lines themselves have no relationship at all with the teams which are playing in a match. Or is this really the case? Actually, the lines on the coupon *can* have a relationship with the teams in a match, because on a week by week basis a home team will *tend* to appear on the same line as before - this is not wholly accurate obviously, but there is a potential relationship which cannot be ignored, and if that home team happens to draw games quite frequently, then perhaps a particular line on the coupon might show a slightly increased chance of providing a drawn result.

Over a short period of time such as that for a single season it will almost always be the case that some pools coupon numbers will show preferential results for obtaining pools points. However over a much longer period of time (several seasons of results) it would be anticipated that the coupon numbers would balance out.

Perm Selection

These radiobuttons allow the user to select which of the four available perms to use - each perm is stored separately and thus the user is free to choose different pools coupon selections for each if necessary.

Prediction Algorithm

These radiobuttons allow the user to select which of the four available algorithms to use. Each algorithm produces a different prediction, which will be reflected in this dialog.

A - H

These columns represent the columns to be marked on the pools coupon.

The user simply needs to click on any row/column in order to select or deselect.

Cp

This is the coupon number for the listbox entry.

Freq

This is the frequency (count) of values for the coupon line, and is dependent on the 'Include' options described below.

Points

This is the total number of pools points scored on the coupon line across the date range selected.

Pred

This is the predicted result column, which will be identical to that shown on the [Prediction Dialog](#). This will only apply to the current prediction date (chosen from the Prediction Dialog) and not the whole range of dates.

Bargraph

This is a bargraph showing the relative sizes of different lines on the pools coupon.

Include

These checkboxes allow the user to select/deselect which actual match results to include in the analysis. This will be of use to pools enthusiasts who will probably wish to identify which coupon numbers are most likely to produce draws based upon factual evidence.

Order

These radiobuttons allow the user to select whether the graph above should be sorted into ascending or descending order.

Sort By

These radiobuttons allow the user to set the sorting criteria for the graph above. This can be by coupon number, count (frequency), or pools points.

Return

Select this button to return to the [Prediction Dialog](#).

Help

Select this button to access this on-line help.

April 6, 1996

These two date buttons allow the user to set the date range to be shown in the graph above. Typically the entire season of results will be analysed, but there may be interest in showing part of a season of results.

Prediction Configuration Dialog

The prediction configuration dialog is only accessible from the [Prediction Dialog](#), and is used to configure the four available prediction algorithms. Each algorithm is totally independent on the other algorithms.

There are no particular recommendations for the user - the best way of identifying which weightings to apply is to try various combinations and then test the result via the [Graphical Analysis Dialog](#). Some combinations will probably work better than others, but do take into account that any one week of results should never be taken in isolation - there will be good and bad weeks in any season of results, and in the particularly good and bad weeks the algorithms will produce very misleading results.

The Algorithms

There are eight parametric values which will combine to produce a final result which becomes the prediction for a match. These are explained in detail in the section on [Algorithms](#). Exactly the same algorithm will be applied to all matches in a fixture list and thus whilst the values of these calculations are not of any real significance, their relationship to each other will be of interest. Essentially the X-axis of the graph shown on the [Graphical Analysis Dialog](#) will be the results of applying the algorithms, and affected directly by the settings made here.

The eight parametric values available on this dialog should be reasonably self-explanatory from the descriptions shown on the dialog, but to take the first (top) as an example this will take the home team goal difference, subtract the away team goal difference, multiply by the multiplier, then add the offset. This will produce a value - if this is large and positive then it will tend to indicate the home team has an advantage - if large and negative then the away team has the advantage - and if close to zero then neither team has an advantage.



These radiobuttons allow the user to select which of the four available algorithms to configure. The algorithms are identical in their capabilities.



These scrollbars allow the user to set a weighting value, with the central position being neutral (at this position the result will always have a null effect for the algorithm). These weighting values are relative, but not strictly so. Thus a weighting value of 200 on one scrollbar will not necessarily be exactly equivalent to 200 on another scrollbar. It will require experimentation to adjust the scrollbars to an optimum position.

Obviously the multiplier could be positive or negative. It should be expected that these would normally be used in their positive domain, however there may be occasions where a negative domain setting might be useful (doing so

will tend to reverse the meaning of home and away wins, so please take care!).

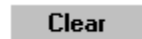


These scrollbars provide an offset *after* the multiplier has been applied. Thus they will tend to shift the result one way or the other relative to other parameter values.

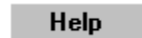
The user may find these scrollbars to be surplus to requirements - they are provided simply to provide more flexibility to the algorithm configurations.



Select this button to return to the [Prediction Dialog](#).



Select this button to return all scrollbars to their neutral position.



Select this button to access this on-line help.

Algorithms

The actual algorithms used for prediction purposes (via the [Prediction Dialog](#)) are explained in detail below, in the order these are presented on the [Prediction Configuration Dialog](#).

The purpose of these algorithms is to produce a single numerical result for each fixture that is to be played, and whilst the value of this result is not critically important, its magnitude in comparison with other results is. Essentially if the result is towards the negative (or lower) end of the results spectrum then the match is considered likely to produce an away win. If towards the positive (or higher) end of the results spectrum then the match is considered likely to produce a home win. If in the central part of the results spectrum then a draw is considered most likely - because the teams are considered to be fairly evenly matched.

This is not a precise science, however in practice these algorithms (reasonably adjusted by the user) will tend to give useful indicators of the likely match outcomes. There will however always be results which will be totally unexpected.

All of the following algorithms can be mixed together in whatever blend the user feels is suitable. However please be aware that the relative scaling of these algorithms (that is, the effect of manipulating the slider bars for each algorithm) is not preset - so one algorithm may be affected significantly more than another by the same amount of change to its slider bar.

Note that in the following, the reference to the home team infers that only those results pertaining to the home record will be considered, and similarly for the away team only those results pertaining to the away record will be considered. Thus an away team which plays brilliantly at home but very poorly away will tend to give an indication of being poor when playing away, etc.

Division Ranking

The first step in applying the algorithms is to provide a starting point. This is the comparison of the teams based upon the ranking of the division in which they belong (this ranking is set via the [Division Dialog](#)). If the two teams in the match are from the same division then this comparison will produce a zero result, meaning all square as far as the teams are concerned.

A positive result here will tend to indicate that the home team has an advantage because they are placed in a higher ranked division. A negative result indicates the away team has the advantage because they are from a higher ranked division.

It is thus important to provide a division ranking for each division defined which is reasonably scaled to the hierarchy of the divisions in terms of advantage. This ranking does not need to be accurate by any means, but

should reflect the playing strength of different divisions in the league hierarchy.

Note that this is an automatic comparison - the user cannot change the effect other than via the division ranking set from the [Division Dialog](#).

Home And Away Goal Difference

This is the total goal difference comparison for both teams in the match. The actual calculation looks like this:

Result = (HomeFor - HomeAgainst) - (AwayFor - AwayAgainst)

Home For vs Away Against

This compares the home goals for and the away goals against. The calculation looks something like this:

Result = HomeFor - AwayAgainst

Home Against vs Away For

This compares the home goals against and the away goals for. The calculation looks something like this:

Result = HomeAgainst - AwayFor

Home Won vs Away Lost

This compares the number of games won by the home side against the number of games lost by the away side. The calculation looks something like this:

Result = HomeWins - AwayLost

Home Drawn vs Away Drawn

This compares the number of matches drawn by the home team against the number of matches drawn by the away team. The calculation looks something like this:

Result = HomeDrawn - AwayDrawn

Home Loss vs Away Win

This compares the number of matches lost by the home team against the number of matches won by the away team. The calculation looks something like this:

Result = HomeLost - AwayWin

Home vs Away Form

This evaluation is slightly more complicated, in that a comparison is made of

the form of the two teams playing home and away. The form is such that a decaying algorithm is used, where the most recent match played gives the strongest indicator, the match before that has less effect, and so on.

The algorithm is such that the calculation is based upon previous match scores, and these results are accumulated for all previous matches, with the decay value decreasing by 20% each time. Thus towards the end of the season the matches at the start of the season will have a negligible effect.

Home Points vs Away Points

This compares the team points of the home and away teams. The team with the highest number of points will have the advantage. The calculation looks something like this:

Result = HomePoints - AwayPoints

Prediction Result

The user will have defined a draw window which will have a lower and upper boundary. After all of the previous weighted (by the user) calculations have been made a comparison to the draw window is made. If the final calculated value is below the lower limit of the draw window then that result is assumed to indicate an away win is most likely. If above the upper limit then a home win is most likely. If between the two limits then a draw is most likely.

Perms Definition Dialog

The perms definition dialog is only accessible from the [Prediction Dialog](#), and is used to define the perm arrangement for the selection of entries to football pools competitions.

It is possible that this dialog may seem slightly confusing to someone who is not familiar with marking and submitting football pools coupons. If this is the case then it would be a good idea to obtain a pools coupon for reference purposes, and cross-reference the detail here with the coupon.

The definitions made by this dialog will be used by the auto-fill and automatic coupon scoring functions available on the [Prediction Dialog](#).

Perm Definition

These columns (A - H) are identical in principle to the selection columns on a pools coupon. Essentially the idea is to place a check mark against rows and columns to represent the perm entry of the submission. Checkmarks are set/reset simply by clicking on the row and column where these are to appear.

The simplest of all perms is a single line 8 from 10 entry, where the submitter marks any 10 rows on the coupon, and the best 8 results (pools points awarded) will be selected when the results come in to make a final pools point total. This would be represented on this dialog with column 'A' (it could actually be any column) having 10 checkmarks placed in a vertical line. It does not actually matter exactly which rows are marked for the column, however for simplicity these would normally start in the topmost row of the grid and work progressively down.

A slightly more complex perm arrangement would be having two lines consisting of the best 4 from 8 on each line, and combining these to provide a final pools point total. This is easily entered into this dialog by checking 8 rows in column 'A', and another 8 rows for column 'B'. However do not check the same rows for columns 'A' and 'B'!

Established pools enthusiasts may well have much more complex perm arrangements, and it may or may not be possible to describe these using this dialog. This dialog can manage fairly complex perm arrangements, but undoubtedly there will be some arrangements which are just too difficult to implement here.

Note that it is possible to mark more than one column on the same row. This will indicate that on that row on the pools coupon there will indeed be two marks made in the different columns. Some perm arrangements do call for this, and it is not a problem to use the application in this way.

Statistics

This table provides feedback to the user about the perm definition. As checkmarks are placed in columns A - H this table will automatically update.

Note there is a [hidden feature](#) available with this table. The row labelled 'Best' is in fact a row of buttons (these do not look like normal buttons!), and clicking on any value will change that value - use the left mouse button to increment, and the right mouse button to decrement.

Thus, taking our example above of a single line perm of 8 from 10, the user would first place checks against 10 of the rows in column 'A' in the grid, and then click on the 'Best' option in this table for column 'A' several times to increment the value to 8. The application would then know that this perm arrangement was for the best 8 from 10 selections for column 'A'.

The nCr row of this table represents the statistical value of how many different subsets are available in the total population for the column. Taking the example of the best 8 from 10 selections, in a total population of 10 there will always be 45 different combinations of a subset of 8 available. This figure is directly related to the payment required to the pools company, as they charge directly by the number of effective lines on the coupon. So a simple single line 8 from 10 arrangement is deemed to be a 45-line arrangement.

It would of course be possible to define a single line perm of taking the best 8 from 58, where the coupon had a mark on every row on the coupon. The number of subsets of 8 in a total population of 58 (the whole coupon) is an enormous figure, and in fact relatively few people in the world could even afford to submit such an entry. This would be a guaranteed jackpot regardless of the actual match results, and in fact the person submitting the arrangement would find that they paid more for the submission than they would ever get back from the winnings. So it just isn't a practical arrangement.

Select Best Columns

This is really intended for more complex multi-column perm arrangements. Basically the application will assume that only one column (the best one) will be used for scoring purposes, so if two lines of 8 from 10 were submitted then whichever yielded the best pools points total would be the one selected by the [Prediction Dialog](#) for showing the points total.

However the slightly more complex arrangement of having two columns of 4 from 8 would require the radiobutton '2' to be selected here, to indicate that the best two columns should be used to provide the total points score, and so on. Some perm arrangements will have even more columns, and it might be the case that the best 4 columns out of the 5 defined (for example) should be selected for points scoring purposes.

Total nCr

This figure gives the total statistical lines available from the perm arrangement. If a single column perm then this value will be the same as for that column in the statistics table described above.

It can get complicated trying to work out this figure, and this calculation is

not guaranteed to always be accurate for all perm arrangements. For relatively simple arrangements it should be fine, but where there are different numbers of checkmarks in multiple columns it could come unstuck. Thus please do not assume this figure is right for all cases!

For simple mathematical reasons it is also possible that the calculation of this figure could suffer from a roll-over problem. If the statistical information becomes excessively large then the result would be meaningless.

Return

Select this button to return to the [Prediction Dialog](#).

Clear

Select this button to clear the perm selection grid.

File

Select this button to save the perm arrangement to a discrete file on the hard disk for later retrieval. This file will not be of use in another application, but provides quick functionality to be able to copy perm definitions from one league file to another.

Help

Select this button to access this on-line help.

Perm

These radiobuttons allow the user to select which of the four available perms to work on. There is no obligation to use all four - this is up to the user.

League Dialog

The league dialog is accessible only from the [Main Dialog](#), and is used to define several parameters for the current league definition. Several of these parameters have a system wide capability.

League Name

This is where the league name is defined (you should never declare a blank name). This name is then used to reference the league system - note that the league combobox on the [Main Dialog](#) is alphanumerically sorted by this name.

Points Awarded For Match Result

These edit controls allow the user to describe points awarded to the team and against the pools coupon results.

Return

Select this button to return to the [Main Dialog](#). This will save the detail just entered in the dialog, and also cause the league table to be recalculated.

Cancel

Select this button to return to the [Main Dialog](#). This will not save the information just entered, and it will not cause recalculation of the league table.

Help

Select this button to access this on-line help.

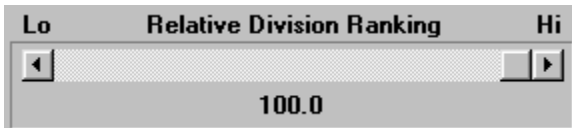
Division Dialog

The division dialog is accessible only from the [Main Dialog](#), and is used to define the divisions within the league definition.

Whilst the dialog is not as cluttered as some other dialogs it is important to understand the significance of the various options provided on this dialog.

Division Name

This is the definition of the division name. Note that this will be used in conjunction with the division ranking detail described below to provide sorting of the divisions in the division combobox on the [Main Dialog](#).



This scrollbar defines the relative ranking of the division against all others within the league, so the higher the ranking, the higher the division is implied to be within the league. Note this is a relative rather than absolute setting, so whether the division is set at 90 or 99 is irrelevant, providing that peer divisions are accordingly scaled to their relative playing strengths within the league system.

In the English league system the topmost (and thus highest ranked) division will be the Premiership.

This setting also affects the order of the divisions as shown in the division combobox on the [Main Dialog](#). It will also play a part in the prediction analysis when two teams from different divisions play each other - see the section on [Algorithms](#).

Indexes Available

Soccer ScoreSheet allows each division in the league to be sorted according to criteria which is definable via this listbox and associated options.

On the left of this group are three radiobuttons - Home, Away, and Total (the latter means home and away combined). Only one of these may be active at any time, and these have a direct bearing on the contents of the listbox alongside.

Basically the user double-clicks on items in this listbox to move that item across to the listbox on the right. The order of setting these items is crucial to the sorting of teams within the division. The first chosen is the first sorting criteria, and so on.

Indexes Set

These are the sorting options which have already been selected for team sorting purposes. The highest (topmost) option takes precedence over the next in the listbox, and so on.

Team sorting can be arranged by any legitimate ordering sequence that the user wishes, and can be a combination of home and/or away data.

Double-clicking any option in this listbox will cause that option to be de-selected, and made available to the listbox on the left. In a situation where options have been selected in the wrong order it will be necessary to delete the options and then re-select them in the proper order.

Return

Select this button to return to the [Main Dialog](#), saving the options selected and causing the league table to be recalculated.

Cancel

Select this button to return to the [Main Dialog](#). Options are not saved, and the league table will not recalculate.

Help

Select this button to access this on-line help.

Team Dialog

The team dialog is accessible only from the [Main Dialog](#), and is used to define the teams within a division.

Team Name

This is the team name which is to be used for display and reporting purposes. The user may have set team ordering within the division (refer to the [Division Dialog](#)) to include the team name option, in which case this information would be used for that purpose.

Division

This combobox allows the user to set the division to which the team belongs. At the end of a season it will be an easy matter to promote/demote teams between divisions via this means.

Statistics At End Of Last Season

Selecting this radiobutton allows the edit controls immediately below to be used for the team statistics at the end of last season. This provides a handy reference to the team for last season.

Offsets To Be Applied To This Season

Selecting this radiobutton allows the edit controls immediately below to be used for offset values to be applied to the current season.

Occasionally the user might miss a fixture or two, and this option provides a means of fooling the application into thinking it has all of the right results for a team. Also, sometimes the football league can impose penalties on a team (deduction of points etc.), and this is also catered for by this technique.

Normal

The user may optionally set unique colours for a given team, which will help identify the team in amongst a list of fixtures etc. This button sets the normal colour for the team.

Disable

The user may optionally set unique colours for a given team, which will help identify the team in amongst a list of fixtures etc. This button sets the disabled colour for the team.

Select this button to return to the [Main Dialog](#). This will save the data just entered, and cause the league table to be recalculated.

Select this button to return to the [Main Dialog](#). This will not save the data just entered, and the league table will not be recalculated.

Select this button to access the on-line help.

Configuration Dialog

The configuration dialog is only accessible from the [Main Dialog](#), and is used for two purposes - the configuration of the listbox pages available on the Main Dialog, and the definition of the 8 match status strings which are used to describe the Match Type.

Main Dialog Page Number

These radiobuttons allow the user to select which of the 8 available pages to edit.

Legend 1

This edit control allows the user to define the small legend that will appear over columns 2 thru 6 of the [Main Dialog](#) team listbox for this page. In a typical representation of the league table this might be 'Home' to indicate home results.

Legend 2

This edit control allows the user to define the small legend that will appear over columns 7 thru 11 of the [Main Dialog](#) team listbox for this page. In a typical representation of the league table this might be 'Away' to indicate away results.

Column Definitions

The user can define up to 12 columns for the team listbox shown on the [Main Dialog](#). The comboboxes and other controls are described below.

1 H A

There are 12 of these control sets on this dialog - all identical in functionality. Each set relates to a specific column on the team listbox shown on the [Main Dialog](#). Note that columns do not have to be defined - they can be left empty if that is what the user desires.

On the left hand side is the column number (1 - 12).

The combobox allows the user to select which type of statistic to show for the column. There are a number of options available.

Alongside the combobox is an edit control, which allows the user to set the text to be shown as the title for the column (maximum 4 characters wide).

On the right are checkboxes for home and away. Place checkmarks to represent the statistic status. Some options in the combobox will ignore this setting, but most are dependent on defining the right option here.

Match Status Descriptions

These 8 edit controls allow the user to set their own text for each type of match status. Note that positions 1 and 2 have a special purpose as described below.

Position 1 is reserved for matches that have not yet been played, and the

status should indicate this.

Position 2 is reserved for matches that have been played as part of the league system. Only matches with this status will be included in the league table recalculation exercise.

Positions 3 thru 8 are not reserved for any special purpose, and in all respects are identical in nature. These are intended for the user to set to whatever they feel is appropriate to reflect matches that have been played and for which a result is valid - however the match will never feature in the league table recalculation. Some suggestions here would be Pools Panel, VOID, CUP, etc.

Accept

Select this button to accept the selections defined, and return to the [Main Dialog](#).

Cancel

Select this button to return to the [Main Dialog](#) without saving the definitions just made.

Help

Select this button to access this on-line help.

File

Select this button to load/save configuration settings from/to an external disk file. This file will not be of any use to an external application, but is intended to provide a quick method of exchanging configuration settings between league tables saved in different files.

Welcome Dialog

The Welcome Dialog is always presented automatically by **Soccer ScoreSheet** upon first startup. There will be a short delay until the options of this dialog are enabled. In the non-registered version the user will have to select an option to continue, whereas in the registered version this dialog will clear automatically.

User Name

This edit control enables the user to enter their registration name. If validated via the serial number (provided by the authors) the application will enable itself as a registered version.

Leave this field blank unless registering!

Serial Number

This edit control enables the user to enter their personal serial number, which is provided by the authors when the user registers the application.

Leave this field blank unless registering!

OK

Select this button to proceed to use the application. This is not necessary in the registered version as the application will automatically clear this dialog.

Help

Select this button to access this on-line help.

Clipboard Dialog

The clipboard/file dialog provides the user with a means of saving information to either the Windows clipboard or a text file, thus allowing this detail to be imported into other applications.

Where available this dialog is accessed via a [hidden feature](#), by clicking on another dialog in an area where there are no other Windows controls.

Start

This is the starting page for the copy operation. For some dialogs from which the clipboard dialog is initiated this will be meaningless, as the information being copied will only apply to a single page.

End

This is the ending page for the copy operation. For some dialogs from which the clipboard dialog is initiated this will be meaningless, as the information being copied will only apply to a single page.

Clipboard

This checkbox allows the user to specify that the detail is to be copied to the Windows clipboard, from where the user can paste it into another application.

File

This checkbox allows the user to specify that the detail is to be copied to a text file. When the user clicks on the Continue button (see below) **Soccer ScoreSheet** will prompt the user for the filename to be used. This filename will always be forced to have an extension of **.CLP**.

Continue

This button signals the application to proceed with the copy operation to either or both the Windows clipboard and/or a text file of the users choosing.

Note that it is not possible to select neither the clipboard or a text file - attempting to do so will result in a pop-up message box to alert the user to this requirement.

Help

This button provides access to this on-line help.

